

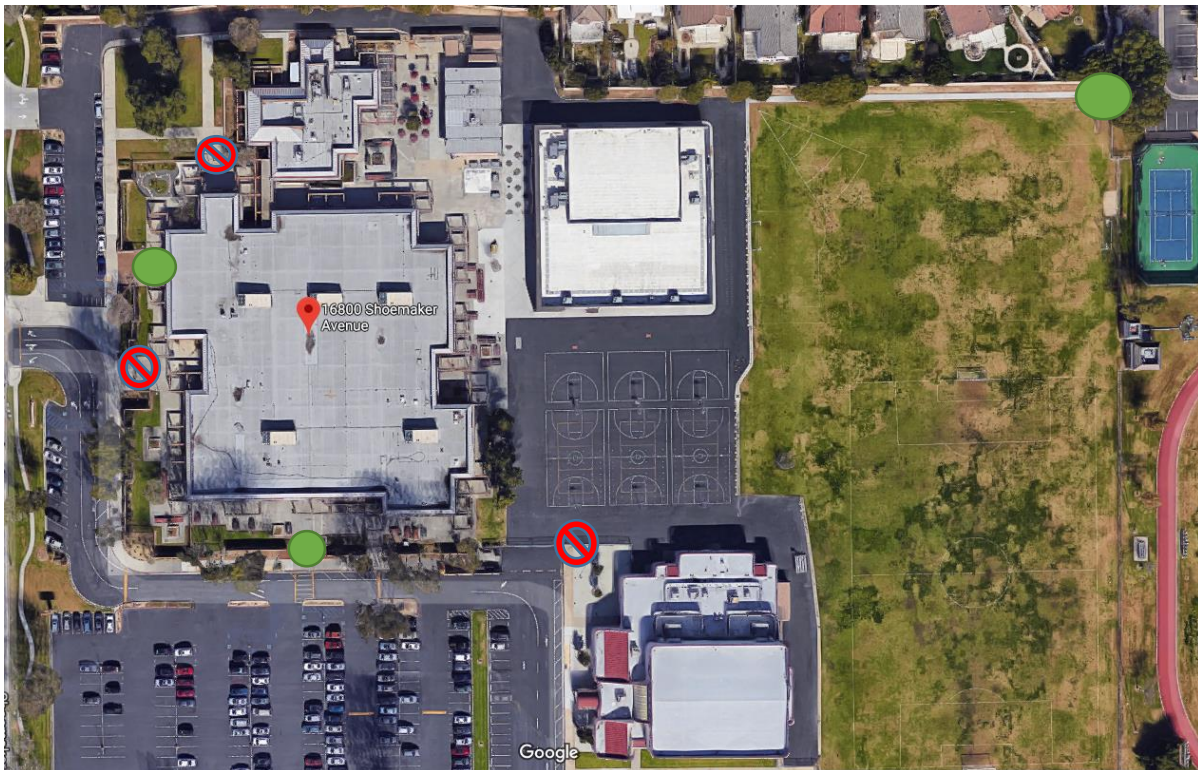
Dear Whitney Families,

The events in Parkland, Florida have caused us to reflect upon our own school's Comprehensive Safety Plan. In recent days we have received valuable feedback from students, parents, staff, and the ABC Unified School District regarding campus safety. Our school Safety Committee held its monthly meeting on 02/27/18; part of the agenda was to evaluate what changes need to take place to further ensure our students' safety.

The Safety Committee has recommended the following changes, which will be implemented beginning Monday, March 5th:

- The number of entrances onto campus before school will be limited to three locations:
 - The gates located next to the Main Office entry
 - The south parking lot gate
 - The gate on the northeast corner leading to the Cerritos Park East parking lot

The available entrances are indicated by green circles in the picture below; the entrances that will no longer be available are identified with red circles. Gates will be opened at 6:45 a.m. and closed when school begins. They will be opened again at the end of the school day to permit students to exit. To ensure your student is appropriately supervised, please refrain from dropping him or her off earlier than 6:45 a.m.



- Our morning school busses will no longer drop students off in front of the gym; instead, all students will be dropped off and picked up in the designated bus zone on the west side of the campus by the Main Office entrance. We ask that you continue to keep that area clear for our busses.

- In addition, the south gate will no longer be available as an access point at the end of 6th period. Students who leave campus prior to the end of the regular school day must exit through the Main Office.
- Students' parents, guardians, or older siblings seeking entry to the Whitney campus must first check-in through the Main Office and present photo ID to office staff before being issued a visitor's badge. In addition, all other prospective guests must schedule appointments with Whitney staff in advance of their visits.
- Any deliveries must be brought to the Main Office. **Do not pass assignments, meals, or other items through the gates directly to students.** Our office staff will notify students when something has been dropped off for them.
- Any person waiting for a student or picking them up on campus must already be registered as an emergency contact in our Aeries database. Students will only be released to those who are on the emergency contact list. No exceptions. We ask that you please confirm with our office staff that your Aeries emergency contact list is up-to-date and complete; if it is not, please come in at your earliest convenience to make any additions.

We understand that these changes to school ingress/egress may have an impact on traffic flow in the parking lot during the first few days. We ask for your patience with us and with one another while dropping off your students in the morning. **Please do not drop students off on Shoemaker Avenue or in the Main Office parking lot, and please do not ask your students to get out of the car and walk between cars through the parking lot.** Students should only exit vehicles at the sidewalk in front of the south gate. Students can also be dropped off in the parking lot of Cerritos Park East and in the neighborhood across Shoemaker Avenue. Remember, traffic is heaviest from 7:45-8:00 a.m.; therefore, we encourage our students to arrive on campus prior to 7:45 a.m.

We invite you to join us at our next PTSA meeting on Monday, March 12th at 6:00 p.m. to learn more about our school's Comprehensive Safety Plan.

We thank you for entrusting us with your child's care and safety; it is our foremost concern. We appreciate your cooperation, understanding, and support as we implement these safety changes for our campus.

Sincerely,

Craig Spratt,
Dean of Students